

**G.J. Gardner.**  
**HOMES**



# **The Long Island.**

G.J. Gardner Display Home.

**13 Silverwisp Road, Chisholm - Waterford Display Village.**

# 📍 13 Silverwisp Rd, Chisholm - Waterford Display Village



## Key Features:

Created to capture the essence of functional style, the Long Island design, exclusive to G.J. Gardner Homes, offers the best of family living.

With plenty of features the Long Island boasts an open plan living area, separate lounge room, a unique kid's zone and large private master bedroom suite.

- + When its time to retreat or enjoy quiet conversation, a lounge room with direct access to a private courtyard awaits.
- + A large private master bedroom boasts a double ensuite, a large walk-in robe and a retreat or study space.
- + The children have their own space in a unique Kids zone with activity room, bathroom, Powder room and 3 bedrooms including walk in robes.



# The Long Island 280.



Suits standard lot width: 16.5m +

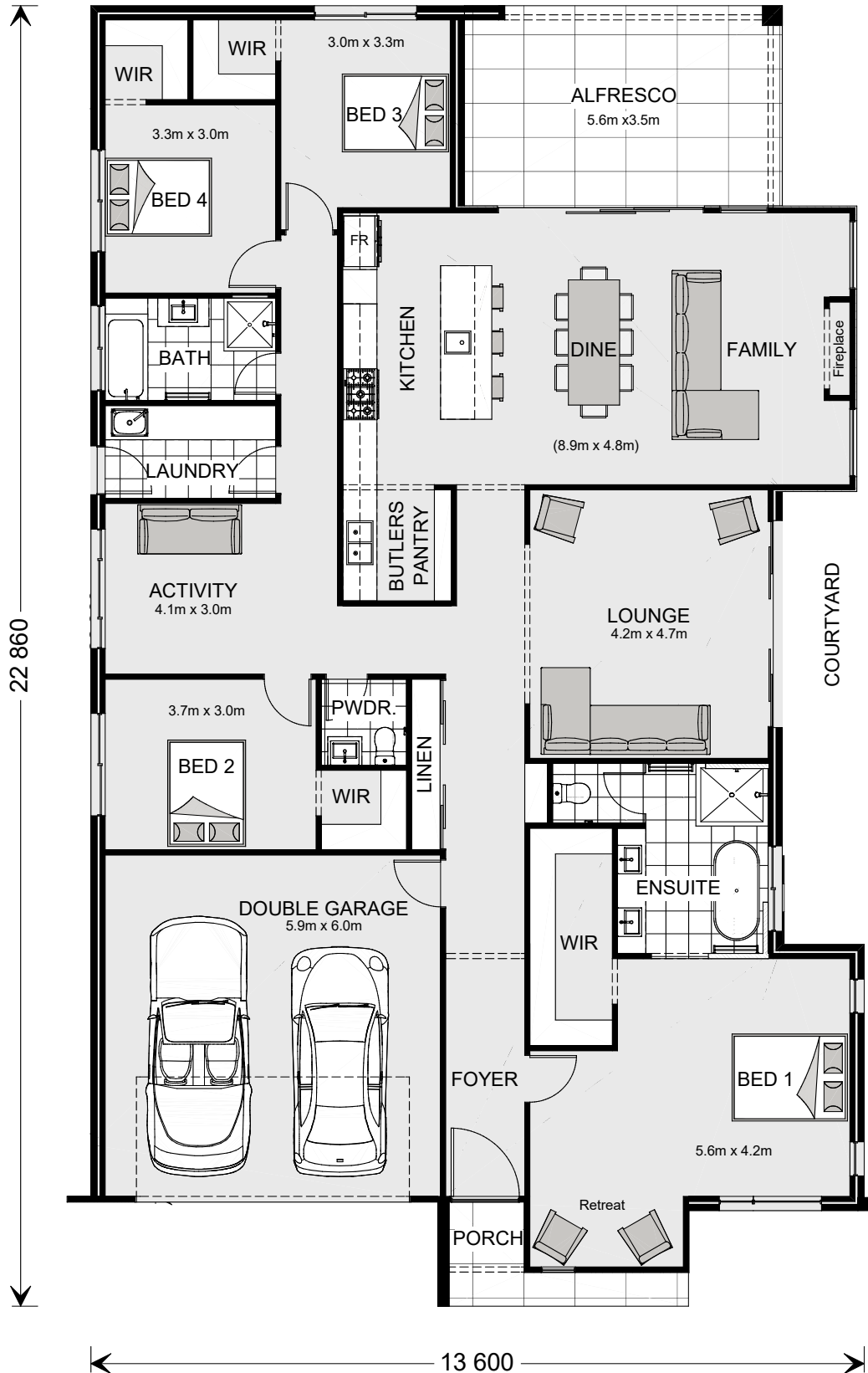
## Floor Areas - Urban Façade

Living: 215.6 m<sup>2</sup>  
Garage: 37.5 m<sup>2</sup>

Alfresco: 19.8 m<sup>2</sup>

Porch: 4.2 m<sup>2</sup>

**Total: 277.1 m<sup>2</sup>**



# Your trusted local builder.

\*Images may depict fixtures, finishes and features not supplied by G.J. Gardner Homes. These items include planter boxes, retaining walls, water features, pergolas, screens and decorative landscaping items such as fencing and outdoor kitchens and barbecues. Mark Eddy Building Pty Ltd trading as G.J. Gardner Homes Newcastle. Builders Licence 106600C.

**G.J. Gardner Homes Newcastle.**  
Call **4929 0100** or visit **154 Hannell St, Wickham**



Locally  
Owned



Australia's Best National Home  
Builder on Product Review



Facts Up  
Front